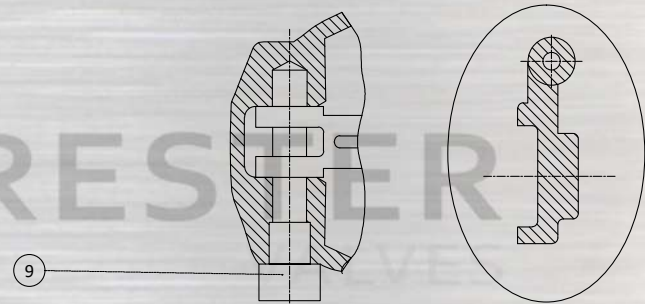


4 " UP

FEATURES

- 1/2"~24" (DN15~DN600)
- W. P.: PN16/40 CLASS 150/300/600 JIS 10K
- W. T.: -20°C ~200°C (-4°F ~ 392°F)
- Investment casting

ITEM	PARTS	MATERIALS
1	BODY	ASTM A351-CF8M
2	DISC	
3	NUT	AISI 304
4	HINGE	ASTM A351-CF8M
5	HINGE PIN	AISI 316
6	GASKET	PTFE/304+ GRAPHIT
7	BONNET	ASTM A351-CF8M
8	SPRING WASHER	AISI 304
9	BONNET BOLT	
10	BOLT	



UNDER - 3"

*8"UP GASKET:304+GRAPHIT

DN	d	L	H	D	C	G	T	f	M	N
15	15	108	51	89	60.5	35	12.1	1.6	16	4
20	20	117	54	98	70	43	12.1	1.6	16	4
25	25	127	64	108	79.5	51	12.1	1.6	16	4
32	32	140	68	117	89.5	64	12.7	1.6	16	4
40	40	165	75	127	98.5	73	14.3	1.6	16	4
50	50	203	97	152	120.5	92	15.9	1.6	19	4
65	65	216	111	178	139.5	105	17.5	1.6	19	4
80	80	241	120	190	152.5	127	19.1	1.6	19	4
100	100	292	162	229	190.5	157	23.9	1.6	19	8
125	125	330	179	254	216	186	23.9	1.6	22	8
150	150	356	203	279	241.5	216	25.4	1.6	22	8
200	200	495	236	343	298.5	270	28.6	1.6	22	8
250	250	622	302	406	362	324	30.2	1.6	25	12
300	300	698	340	483	432	381	31.8	1.6	25	12
350	337	787	385	533	476.5	413	35	1.6	29	12

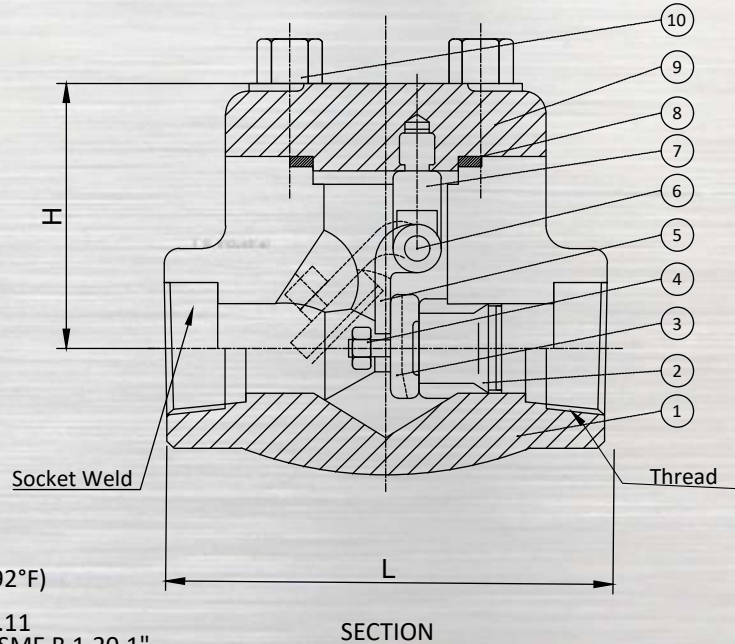
unit: mm

DN	d	L	H	D	C	G	T	f	M	N
1/2 "	0.59	4.25	2.01	3.50	2.38	1.38	0.48	0.06	0.63	4
3/4"	0.79	4.61	2.13	3.86	2.76	1.69	0.48	0.06	0.63	4
1"	0.98	5.0	2.52	4.25	3.13	2.01	0.48	0.06	0.63	4
1-1/4"	1.26	5.51	2.68	4.61	3.52	2.52	0.5	0.06	0.63	4
1-1/2"	1.57	6.5	2.95	5	3.88	2.87	0.56	0.06	0.63	4
2"	1.97	7.99	3.82	5.98	4.74	3.62	0.63	0.06	0.75	4
2-1/2"	2.56	8.5	4.37	7.01	5.49	4.13	0.69	0.06	0.75	4
3"	3.15	9.49	4.72	7.48	6	5	0.75	0.06	0.75	4
4"	3.94	11.5	6.38	9.02	7.5	6.18	0.94	0.06	0.75	8
5"	4.92	12.99	7.05	10	8.5	7.32	0.94	0.06	0.87	8
6"	5.91	14.02	7.99	10.98	9.51	8.5	1	0.06	0.87	8
8"	7.87	19.49	9.29	13.5	11.75	10.63	1.13	0.06	0.87	8
10"	9.84	24.49	11.89	15.98	14.25	12.76	1.19	0.06	0.98	12
12"	11.8	27.48	13.39	19.02	17.01	15	1.25	0.06	0.98	12
14"	13.27	30.98	15.16	20.98	18.76	16.26	1.38	0.06	1.14	12

unit: in

Forged Steel Swing Check Valve

800 Lb, 900 Lb ~ 1500 Lb



FEATURES

- 1.- 3/8" - 2" (DN10 - DN50)
- 2.- W.P. 800 LB
- 3.- W.T. -29°C ~ 200°C (-4°F ~ 392°F)
- 4.- Forged Steel
- 5.- "Socket weld end to ASME B16.11
Screwed ends (NPT) to ANSI/ASME B 1.20.1"
- 6.- Full port
- 7.- Two piece self aligning packing gland

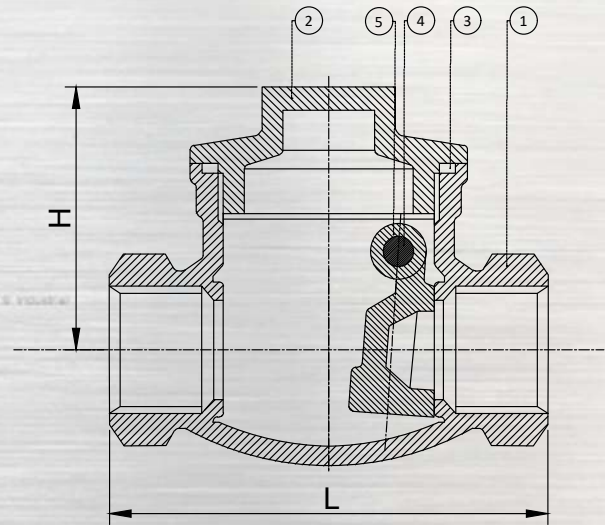
Standard Material Specifications

Item	Parts	SS to ASTM	
		Type F304(L)	Type F316(L)
1	Body	A182 F304(L)	A1
2	Seat	A276 304 (L)	A182 F316(L)
3	Swing Disc	A276 304 (L)	A276 F316(L)
4	Nut	A193 8	A193 8M
5	Hinge	A182 F304L	A182 F316(L)
6	Pin	A182 F304	A182 F316
7	Pointlevis	A182 F304	A182 F316(L)
8	Gasket	SS + PTFE	
9	Bonnet	A182 F304	A182 F316(L)
10	Bolt	A193 B8M	A193 B8M
Suitable Medium			
Suitable Temperature		-29°C~180°C	

Dimensions (mm) and Weights (Kg)

NPS		3/8"	1/2 "	3/4 "	1 "	1 1/4"	1 1/2"	2 "
L	800 Lb	79	79	92	111	120	120	140
	900- 1500 Lb	92	111	111	120	120	140	178
W	800 Lb	61	61	78	84	101	120	133
	900- 1500 Lb	79	79	79	97	105	120	140
Weights	800 Lb	1.1	1	1.9	3.9	4.5	7.3	10
	900- 1500 Lb	3.1	3	3.6	4.3	6.1	8.8	12.6

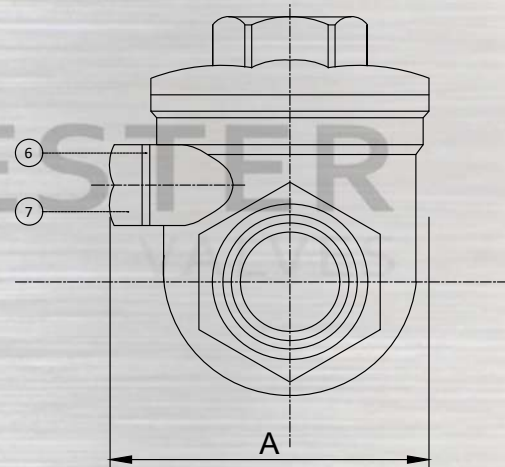
Screwed End Swing Check Valve



SECTION

FEATURES

1. 1/2"~3" (DN15~DN80)
2. W. P.: 200WOG
-W. T.: -20°C ~200°C (-4°F ~ 392°F)
4. Investment casting
5. Thread type: ASME B1.20.1 (NPT), DIN 2999 & BS21, ISO228/1 & ISO7/1



ITEM	PARTS	MATERIALS
1	BODY	ASTM A351-CF8M
2	CAP	PTFE
3	SEAL	AISI 316
4	PLUG	ASTM A351-CF8M
5	DISC	PTFE
6	GASKET	AISI 304
7	BOLT	

DN	L	H	A	Weight (kg)
15	65	44	46.5	0.363
20	80	52	52	0.426
25	89	62	56	0.655
32	105	67	65	0.927
40	120	79	75	1.490
50	139	80	84	2.150
65	181	96	108	5.270
80	200	104	137	7.700

unit: mm

DN	L	H	A	Weight (kg)
1/2"	2.56	1.73	1.83	0.8
3/4"	3.15	2.05	2.05	0.94
1"	3.5	2.44	2.2	1.44
1-1/4"	4.13	2.64	2.56	2.04
1-1/2"	4.72	3.11	2.95	3.28
2"	5.47	3.15	3.31	4.74
2-1/2"	7.13	3.78	4.25	11.62
3"	7.87	4.09	5.39	16.98

unit: in